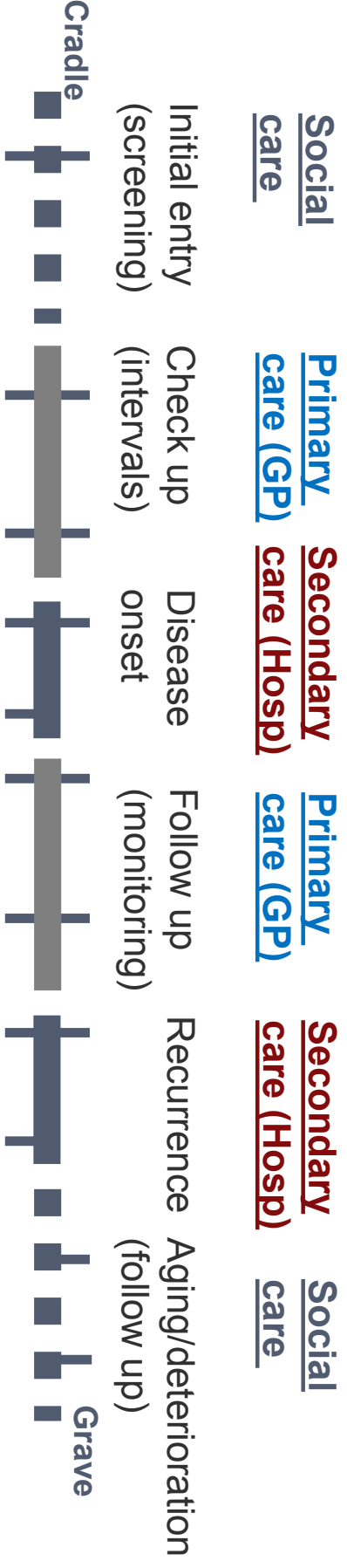


Stitching together the health journey of patients/citizens



* Clinical letters

* Investigations

- genetics (*) (*) *
- phenomics/bloods (*) (*) *
- imaging *
- physiological *

* Monitoring

wearables/sensors

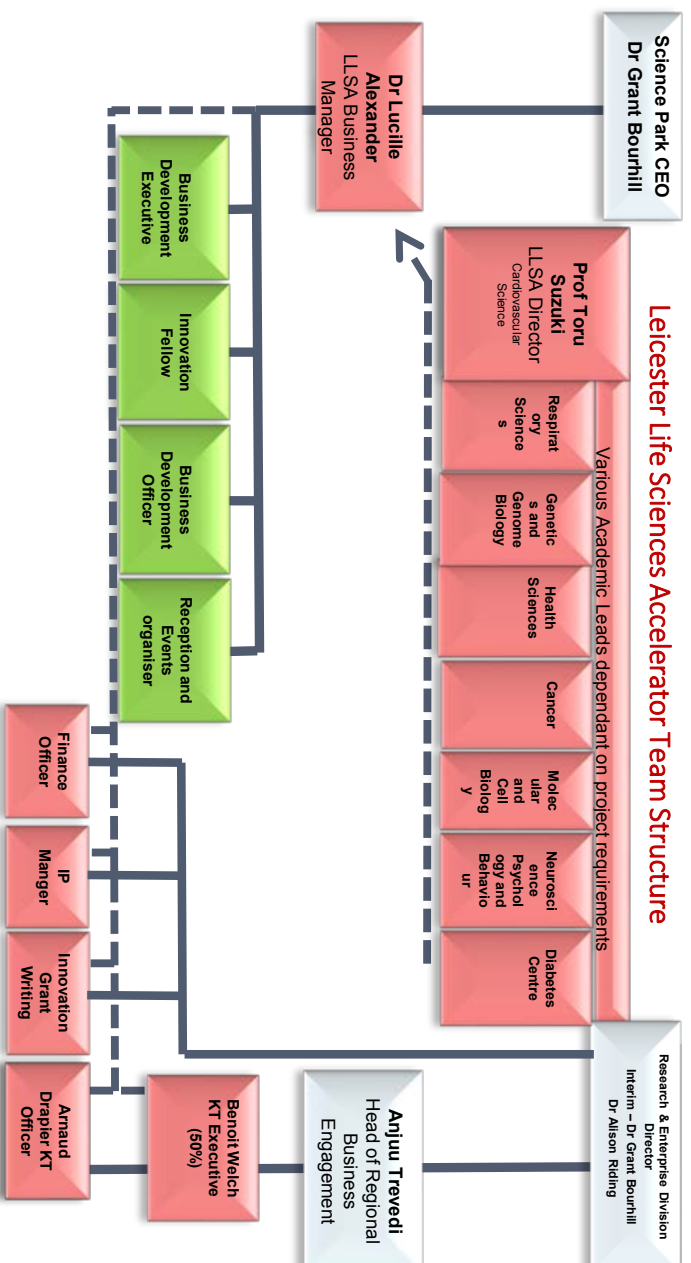
- *
- *
- *
- *
- *
- *
- *
- *

Why Leicester – unique selling points (USPs)

- One of the largest and busiest NHS trusts in the UK (~1mil pts)
- Large/stable ethnically-diverse population (~3 generations)
- Well-characterised primary/secondary care cohorts
- NIHR Biomedical Research Centre focusing on chronic disease
- Regional life science cluster including medtech/SMEs
- Academics and clinicians with interest in healthcare data (including science&engineering, non-clinical researchers)
- £450Mil investment by government to University Hospitals
- Leicester Life Sciences Accelerator for industrial engagement

Leicester Life Science Accelerator

- Support innovative industrial partnerships & collaborations in life sciences/healthcare
- 3 yrs (Jan 2020-Dec 2022), £1.4m EU-funded



Support and innovation funding for businesses

MIDLANDS ENGINE



UK Consortium for Metabolic Phenotyping (MAP/UK)

- Partnership with the National Phenome Centres to advance phenomics
- Suzuki Lab at Uni of Leicester designated as **clinical/translational hub**

